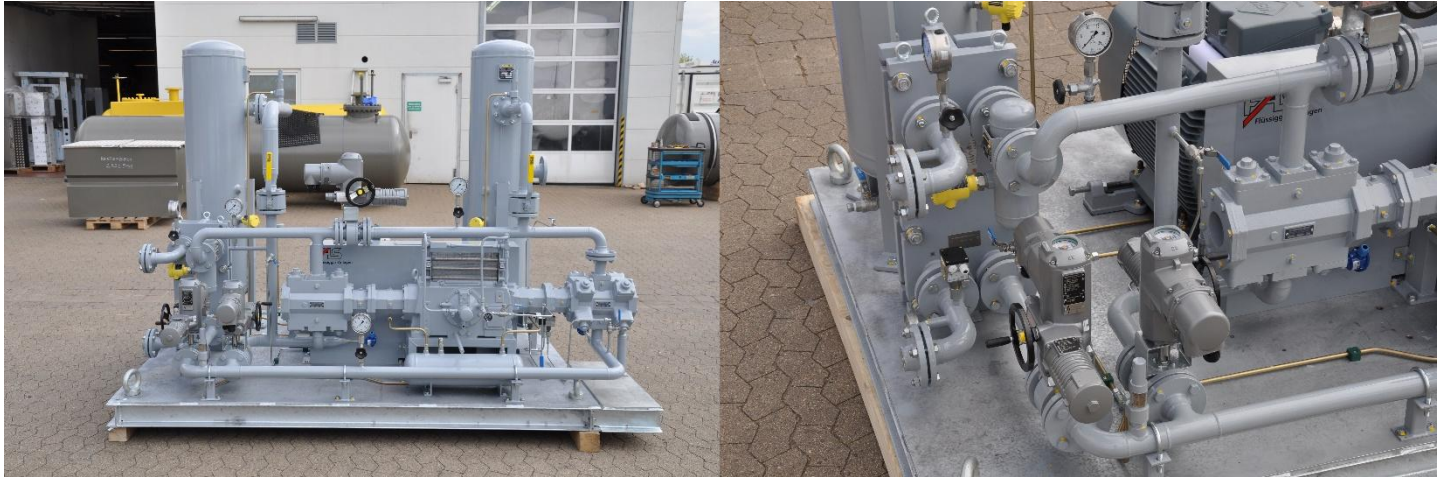


PISTON COMPRESSOR FOR AMMONIA (NH3)



Application:

Process technology for a chemical plant

Features:

- Combined 1- and 2-stage design
- Automated transition in 2-stage operation
- Application of control valves with AUMA drives
- Heat exchanger as intercooler
- Complete piping system
- liquid separator
- pulsation dampers
- Instrumentation and monitoring of the work process
- Valves according to Pressure Equipment Directive 97/23 / EC, design according to ATEX and Machinery Directive with Declaration of Conformity
- Suitable for installation outside and inside
- Suitable for installation in Ex zone II

Technical Data:

Inlet pressure min	:	0,5 bar	
Inlet pressure max.	:	21 bar	
Stroke volume	:	1 staged operation 302,8 Nm ³ /h	2 staged operation 179,4 Nm ³ /h
Engine power	:	58 kW	
Weight:	:	2650 kg	



DIN EN ISO 9001



SCC**



DGRL 97/23/EG



ATEX



ASME



EAC

46320/rev1/06-2015/d