

## S13D / C13D 3-piece ball valve 1/2" up to 4"



### Spezifikation

- 2-way ball valve with BSP, NPT female thread or but weld ends (BW)
- Full bore
- Housing 1.4408 or steel, ball and shaft 1.4401
- Flange plate ISO 5211 for the direct drive construction of pneumatic or electric drives
- Seat PTFE
- Maximum operating pressure 63 barg
- Temperature -30° to + 180° C.
- Overall length for threads in accordance with DIN3203 M4, for welded ends in accordance with DIN3202 S13
- Blow-out safe shaft, Lockable hand lever
- Anti-static, suitable for vacuum

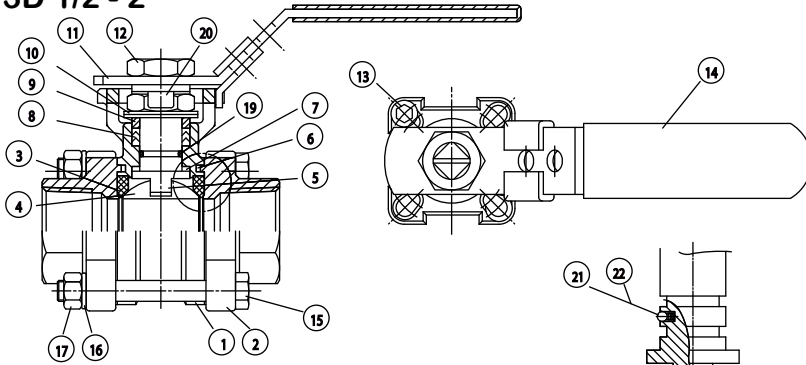
### Options:

- Automatic electric or pneumatic operation
- SW welding ends
- Spindle extension
- Switchbox
- Fire safe version according to API607 4e edition
- Spring closing lever up to 2"

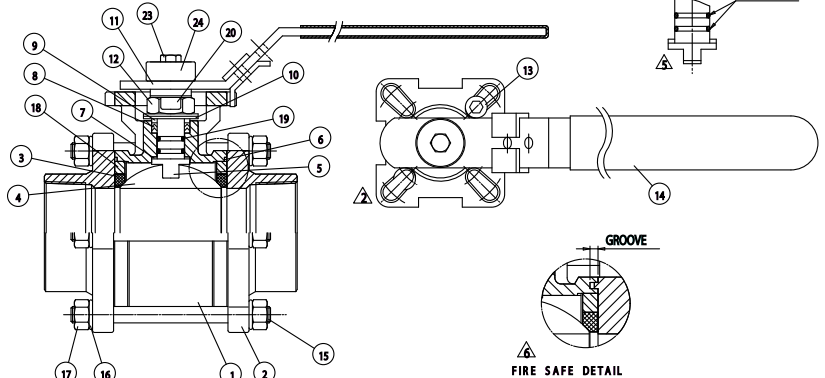
### Certificates:

- 3.1 Material certificate
- CE certificate
- Fire safe according to API607 4th edition
- TA-Luft certificate

### S13D 1/2" - 2"



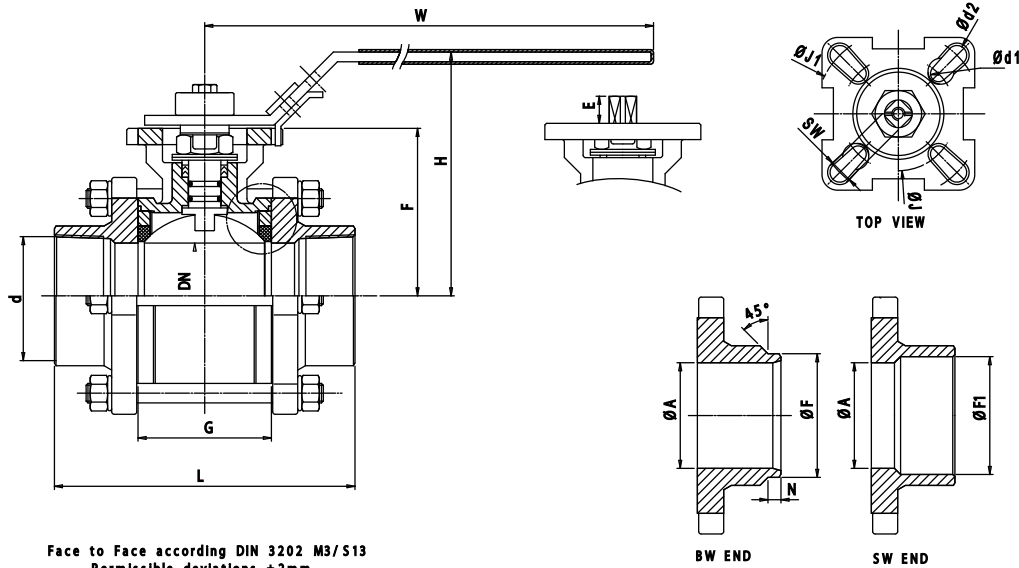
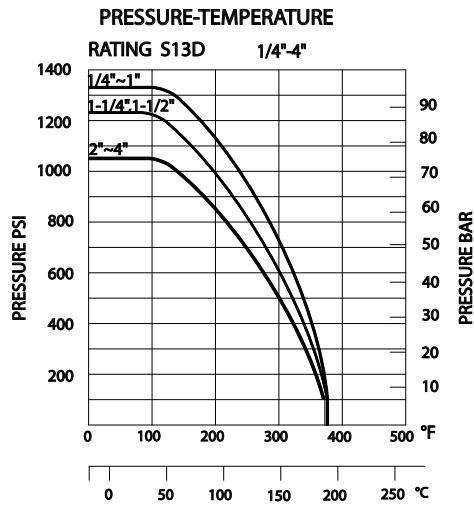
### S13D 2 1/2" - 4"



		S13D	C13D
Item	Beschreibung	Materialien	Materialien
1	Case	1.4408	Stahl
2	Endkap	1.4408	Stahl
3	Sitz	PTFE	PTFE
4	Kugel	1.4401	1.4401
5	Welle	1.4401	1.4401
6	Dichtung	PTFE	PTFE
7	Friktionscheibe	PTFE	PTFE
8	Dichtung	PTFE	PTFE
9	Packungdrucker	VA	VA
10	Tellerfeder	V2A	V2A
11	Handhebel	VA	VA
12	Mutter	V2A	V2A
13	Schraube	V2A	V2A
14	Griff	PVC	PVC
15	Schraube	V2A	V2A
16	Scheibe	V2A	V2A
17	Mutter	V2A	V2A
18	Scheibe	V2A	V2A
19	O-Ring	Viton®	Viton®
20	Arretierung	VA	VA
21	Feder	1.4401	1.4401
22	Kugel	1.4401	1.4401
23	Schraube	V2A	V2A
24	Scheibe	V2A	RVS

Fire safe execution: Pos. 6 and 8 is Graphite

S13D / C13D 3-piece ball valve 1/2" up to 4"



Dimensions 1/2" up to 4" [mm]									
d	1/2"	3/4"	1"	1 1/4"	1 1/2"	2"	2 1/2"	3"	4"
DN	16	20	24.5	32	38	50	65	80	100
L BSP	75	80	90	110	125	150	185	205	240
L-BW	75	90	100	110	125	150	190	220	270
H	70.9	73.4	84.1	98.3	109.5	110.9	155	165	180
W	110	110	135	135	165	165	300	335	335
G ?	25.2	27.7	33	41.2	49.3	63.6	82.1	95.8	117.8
J = ØP-ISO	36	36	42	42	50	50	70	70	70
J1 = ØP-ISO	42	42	50	50	70	70	102	102	102
d1	6	6	6	6	7	7	9	9	9
d2	6	6	7	7	9	9	11	11	11
SW	9	9	11	11	14	14	17	17	17
E	8	8	10	10	14.8	14.8	17.1	17.1	17.1
F	17	22	28	37	43	54	76.1	88.9	114.3
F1	21.3	26.9	33.7	42.4	48.3	60.3	77	90	115.5
Gewicht [kg]	0.596	0.871	1.359	2.009	2.904	4.669	10.34	15.26	24.6

## S33D Stainless Steel 3-piece ball valve 1/2" up to 2"



### Spezifikation

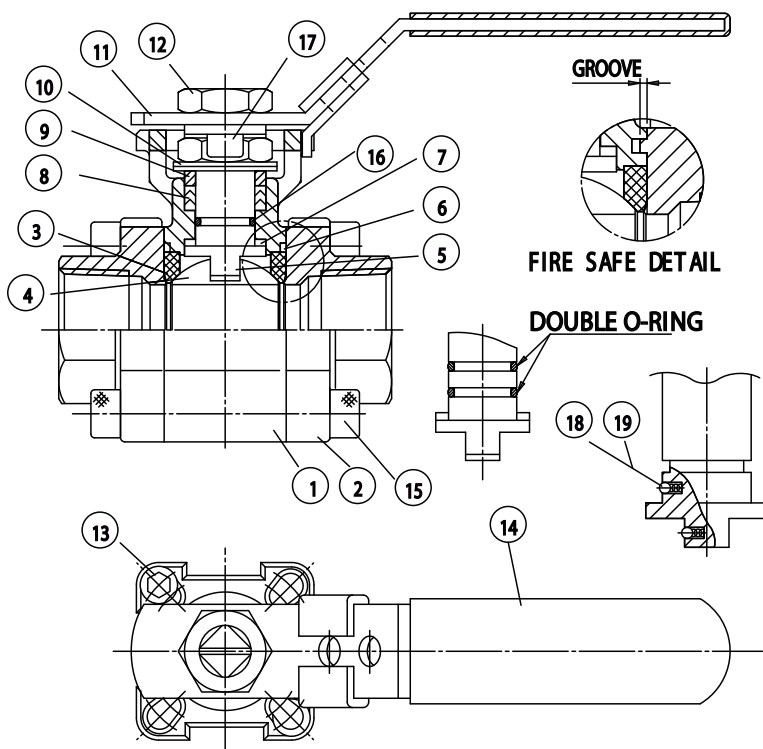
- 2-way ball valve with BSP internal thread or welding ends (BW)
- Full passage
- Housing 1.4408, ball and shaft 1.4401
- Flange plate ISO 5211 for the direct drive construction of pneumatic or electric drives
- Seat PTFE
- Operating pressure maximum 100 barg
- Temperature -30° to + 180° C.
- Overall length for threads in accordance with DIN3203 M4, for welded ends in accordance with DIN3202 S13
- Blow-out safe shaft, Lockable hand lever
- Anti-static, suitable for vacuum

### Options:

- Automatic electric or pneumatic operation
- Socket weld or NPT female thread end caps
- Spindle extension, spring closing lever up to 2"
- Fire safe version according to API607 4e edition
- 2 1/2 " and 3 " version

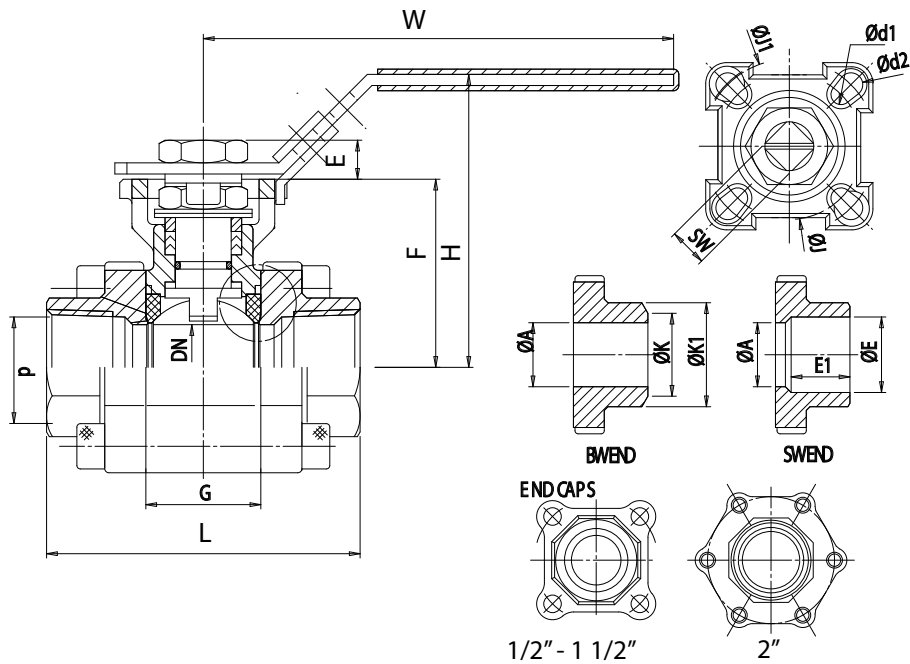
### Certificates:

- 3.1 Material certificate
- CE certificate
- Fire safe according to API607 4th edition
- TA-Luft certificate



Item	Discription	Materials	
		Standard	Fire Safe
1	Gehäuse	1,4408	1,4408
2	Endkappe	1,4408	1,4408
3	Sitz	PTFE 15% Glasfaser-verstärkt	PTFE 15% Glasfaser-verstärkt
4	Kugel	1,4401	1,4401
5	Welle	1,4401	1,4401
6	Dichtung	PTFE	Graphite
7	Friktionscheibe	PTFE	PTFE
8	Dichtung	PTFE	Graphite
9	Packungdrucker	V2A	V2A
10	Tellerfeder	V2A	V2A
11	Handhebel	VA	VA
12	Mutter	V2A	V2A
13	Stopschraube	V2A	V2A
14	Griff	PVC	PVC
15	Schraube	V2A	V2A
16	O-Ring	Viton®	Viton®
17	Arretierung	VA	VA
18	Kugel	V2A	V2A
19	Feder	V2A	V2A

S33D Edelstahl 3-Teiliger Kugelhahn - 1/2" bis 2"



Abmessungen 1/4" bis 2" [mm]						
d	1/2"	3/4"	1"	1 1/4"	1 1/2"	2"
DN	16	20	24,5	32	38	50
L-BSP	75	80	90	110	120	140
L-BW	75	90	100	110	125	150
H	70.9	73.4	84.1	98.3	109.5	118.9
W	110	110	135	135	165	165
G	25.2	27.7	33	41.2	49.3	63.6
J = ØP-ISO	36	36	42	42	50	50
J1 = ØP-ISO	42	42	50	50	70	70
d1	6	6	6	6	7	7
d2	6	6	7	7	9	9
SW	9	9	11	11	14	14
E	8	8	10	10	14.8	14.8
K	17	22	28	37	43	54
K1	21.3	26.9	33.7	42.4	48.3	60.3
F	42.3	44.8	54	59.2	73.5	82.9
Gewicht [kg]	0.826	1.014	1.698	2.575	3.707	6.58

## S216D/C216D Flansch-Kugelhahn PN16-PN40 - DN 15 bis DN 100



### Spezifikation

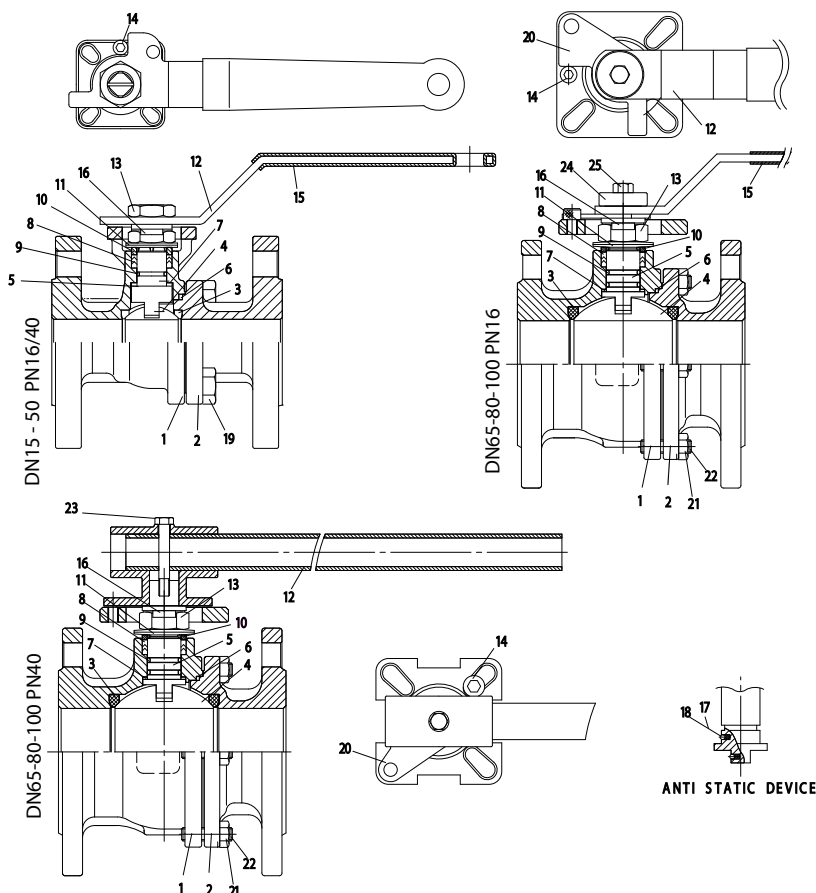
- 2-Wege Flansch-Kugelhahn mit Einbaulänge gemäß DIN3202 F4
- Voller Durchgang
- Gehäuse 1,4408 oder Stahl, Kugel und Welle 1,4401
- Flanschplatte ISO 5211 für den direkten Antriebsaufbau von pneumatischen oder elektrischen Antrieben
- Sitz und Dichtungen PTFE
- Druckklasse PN16 und/oder PN40, Flanschen RF DIN2501
- Ausblassichere Welle, Arretierbare Handhebel
- Geeignet für Vakuum
- Anti-Statisch
- Temperatur -30° C bis 180° C.

### Optionen:

- Automatisch elektrische oder pneumatische Bedienung
- Spindelverlängerung
- Endschalterkasten
- Fire safe version
- Federschließende Handhebel bis DN 50

### Zeugnisse:

- 3.1 Material Zeugnis
- CE Zeugnis
- Fire safe API607 4e Ausgabe

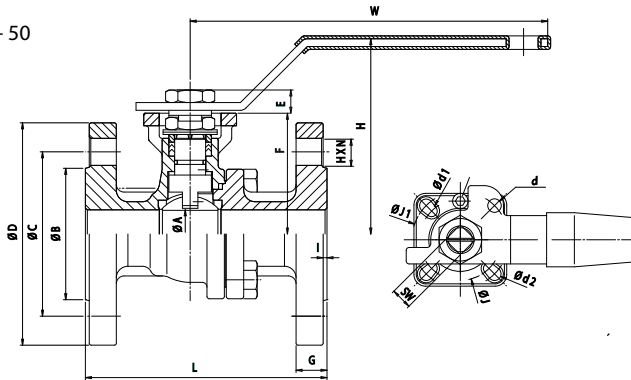


Item	Beschreibung	Materialien S216D	Materialien C216D
1	Gehäuse	1,4408	GS-C-25
2	Endstück	1,4408	GS-C-25
3	Sitz	PTFE	PTFE
4	Kugel	1,4401	1,4301
5	Welle	1,4401	1,4301
6	Gehäusepackung	PTFE	PTFE
7	Friktionscheibe	PTFE	PTFE
8	Dichtung	PTFE	PTFE
9	O-Ring	Viton®	Viton®
10	Packungdrucker	V2A	V2A
11	Tellerfeder	V2A	V2A
12	Handhebel	VA	VA
13	Mutter	V2A	V2A
14	Stop Bolz	V2A	V2A
15	Griff	PVC	PVC
16	Sicherung	V2A	V2A
17	Feder	V4A	V4A
18	Kugel	V4A	V4A
19	Bolz	V4A	V2A
20	Arretierung	VA	VA
21	Mutter	V2A	V2A
22	Schraube	V2A	V2A
23	Bolz	V2A	V2A
24	Lagerung	V2A	V2A
25	Bolz	V2A	V2A

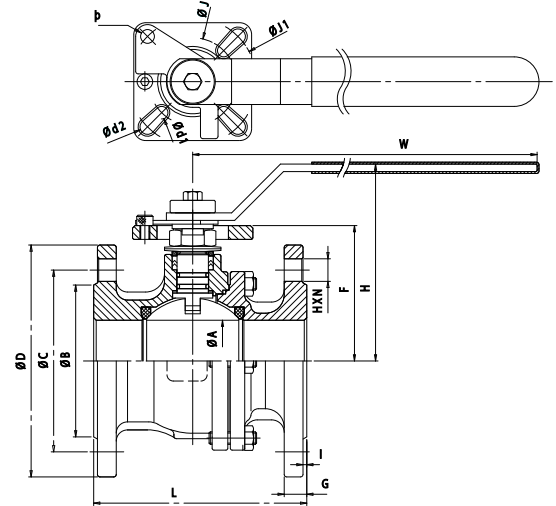
Beim Fire safe Ausführung: Pos. 6 und 8 ist Graphite

S216D/C216D Flansch-Kugelhahn PN16-PN40 - DN 15 bis DN 100

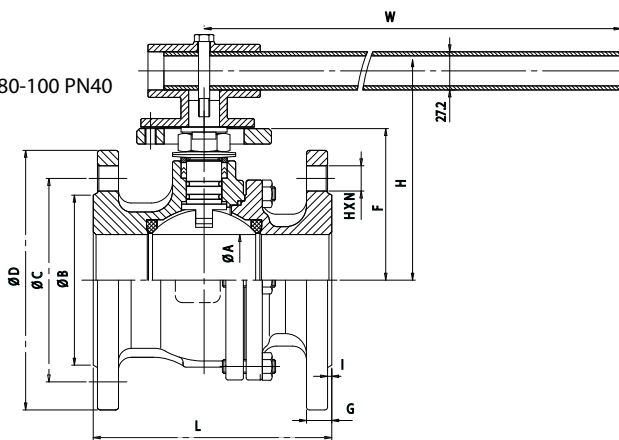
DN 15 - 50



DN 65-80-100 PN16



DN 65-80-100 PN40



Dimensions DN 15 bis DN 50 PN16/40 [mm]							DN 65 bis DN 100 PN16 [mm]			DN 65 bis DN 100 PN40 [mm]		
DN	15	20	25	32	40	50	65	80	100	65	80	100
A	16	20	25	32	38	50	65	80	96	65	80	96
C	65	75	85	100	110	125	145	160	180	145	160	190
D	95	105	115	140	150	165	185	200	220	185	200	235
H	89	89	101	112	116	125	154	165	180	150	160	175
W	114	114	187	187	222	222	350	350	350	265	365	365
G	16	18	18	18	18	20	18	20	20	22	24	24
J	36	36	42	42	50	50	70	70	70	70	70	102
J1	42	42	50	50	70	70	102	102	102	102	102	125
d	6	6	6	6	7	7	9	9	9	9	9	11
d1	6	6	7	7	9	9	11	11	11	11	11	13
SW	9	9	11	11	14	14	17	17	17	17	17	22
H x NM	14x4	14x4	14x4	18x4	18x4	18x4	18x4	18x8	18x8	18x8	18x8	22x8
L	115	120	125	130	140	150	170	180	190	170	180	190
I	2	2	2	2	3	3	3	3	3	3	3	3
F	54	56	62.5	72	78	87.2	107	117.3	132.3	107	117.3	132.3
E	8	8	12	12	14.8	14.8	17.1	17.1	17.1	17.1	17.1	22
Gewicht [kg]	2.28	2.86	3.84	5.32	6.56	9.04	13.94	17.58	24	15.8	20.5	32.0